

---

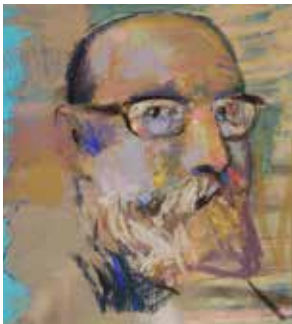
---

## Casey Klahn, JUROR

Casey Klahn as an instructor is inspiring, casual and will open new doors in your thinking. A lot of his work is done in a semi-abstract style. He enjoys and executes his work with strong, delightful, and surprising color combinations.

Casey Klahn was born in 1958 in Aberdeen, Washington and raised in Hoquiam, Washington.

He continues the expression of ideas that began over a century ago with Modernist painters such as Cézanne, van Gogh, Degas and Matisse, and yet his color designs are evocative and new. Casey is a signature member of the Pastel Society of America.



## 2019 – 2020 CALENDAR

- Sept. 1 – Digital entries deadline. Entries must be entered at <http://www.onlinejuriedshows.com> by midnight of this date
- Sept. 19 – Acceptance notifications sent out
- Oct. 21 – Deadline for receipt of shipped entries
- Oct. 26 – Deadline for hand delivered entries (Noon until 3:00 pm)
- Nov. 8 – Show opens
- Nov. 8 – 5:30 – 7:30 pm – Opening Reception and Award Ceremony (Juror will be present)
- Feb. 22, 2020 – Show closes
- Feb. 24, 2020 – Pick up hand delivered entries (Noon until 3:00 pm)
- Feb. 26, 2020 – Shipped entries returned if not sold

## SALES

All entries must be for sale. Sale price listed on entry form cannot be changed. Arkansas Pastel Society/Central Arkansas Library System will retain 40% of any and all sales. If an entry is sold between acceptance and opening of the show, it must be withdrawn from the show. Entry fee will not be refunded.

## ELIGIBILITY

- Open to all artists 18 years old or older.
- Entries must be original, unpublished and executed within the last three years. Paintings that have won an award at a national level exhibition are not eligible. Best of Show from 2017 not eligible to enter this year.
- Entries must be at least 80% soft or oil pastel.
- Works produced in a class, workshop, or under another artist's supervision are not eligible. Images from Internet or copyrighted materials may not be used as source.
- Accepted works may be refused if digital image does not accurately represent work.
- APS reserves the right to refuse any work submitted.
- Entries must be suitably framed under glass or Plexiglass and ready to hang with wire hangers (sawtooth hangers are absolutely not allowed).
- All accepted works must remain hanging for the duration of the exhibit.

## ENTRY

- Artist may submit one entry for \$25 (APS Members) or \$30 (non-APS Members).
- Additional entries may be submitted for \$10 each (for APS Members) and \$15 each (for non-APS Members) up to a total of 3 entries per artist. Only 2 entries per artist will be accepted.
- To enter go to: <http://www.onlinejuriedshows.com>.

Note: Instructions are clear and simple. Accepted paintings will be shown and available for purchase online during the entire show. *All accepted paintings must be available for exhibition. Failure to do so will result in a two year ban from APS shows.*

If you would like to join the Arkansas Pastel Society, our membership form can be found at <http://www.arkansaspastelsociety.com/about> and membership forms sent to:

Karen Jones, Membership Chairperson  
P.O. Box 1373  
Mountain Home, AR 72654  
Checks payable to Arkansas Pastel Society.

## DELIVERY AND RETURN OF ACCEPTED ENTRIES

- Shipped entries must be received between Oct. 14, 2019 and Oct. 21, 2019.
- Shipped entries should be sent prepaid in reusable crates with a PREPAID RETURN shipping label.
- Please do not use foam peanuts for packing.
- Insure for your own protection.
- Shipping instructions, including handling fees and return shipping information, will be sent upon notification of acceptance.
- Shipped entries will be packaged and returned no later than Feb. 27, 2018.
- Pick up hand-delivered entries February 24, 2018.

## LIMITATIONS OF LIABILITY

Artwork will be handled with all possible care. However, neither the Arkansas Pastel Society, Butler Studies Institute Gallery, nor any member of APS will be held responsible for any loss or damage.

APS recommends that Plexiglass be used, especially for works that will be shipped. Glass is used at artist's risk. Artists will be responsible for repairs to artwork damaged in shipping (Ex.: broken glass, scratched plexiglass, excessive pastel dust or dirty mat). When the painting is received, the artist will be contacted with the price of repairs. If artist does not wish to repair the painting, it may be withdrawn from show. Entry fee will not be returned. Entering this exhibition shall constitute understanding and agreement on the part of the artist with the conditions stated. APS suggests that artists carry separate insurance.

Permission to reproduce artist's work for publicity purposes is assumed with acceptance.

Our web site is [www.arkansaspastelsociety.com](http://www.arkansaspastelsociety.com). The prospectus may be downloaded from the website. For questions, email [debbie.strobel@icloud.com](mailto:debbie.strobel@icloud.com).



Lois Davis  
1020 Angel Drive  
Alexander, AR 72002



**Arkansas Pastel Society**  
**8th National Exhibition**  
Nov. 8, 2019 – Feb. 22, 2020

*Reflections in Pastel*

Butler Center for Arkansas Studies  
401 President Clinton Avenue  
Little Rock, AR 72201

Juror of Selection and Awards  
**Casey Klahn**

