

APRIL

2012

ARKANSAS Pastel Society

Spring is in the air and April's Arkansas Pastel Society meeting was an educational and enjoyable springtime meeting! We got to reconnect, recharge and get a refresher course from our speaker, Matt McLeod, on using contrast and color in our paintings.

We have lots of exciting things planned for our membership in the next few months. The Garven Gardens Members Exhibit is opening this month, so we hope you can attend the reception or stop by and see the exhibit in Hot Springs. The Sally Strand Workshop is coming up in June, so if you are still considering attending, please call Diana Shearon at 501-590-5934 as soon as possible and send her your deposit. Also, in June, we will have a Member's Only Exhibit at the South AR Art Center. Detailed information about the exhibit is included in the newsletter.

Virmarie



Website: www.arkpastel.com
Web Master: Marlene Gremillion at gremartist@gmail.com.

APRIL 2012

People, Places & Things!

May Program – Hugh Dunnahoe

Hugh Dunnahoe's professional experience in illustration and graphic design has provided him a solid platform of communication from which to interpret his subjects, and a mastery of a wide variety of art media and styles. Currently working mostly in oils, his original paintings are boldly diverse in style. Hugh's work is an exploration of relationships - our connection to the natural and urban landscapes we encounter, and to each other. He was the judge for our Garvan Gardens Show.



Designing Women Bazaar at the Governor's Mansion

Sister Maria Liebeck and Debbie Strobel have been invited to participate in this event on April 17, 5:30-8:30pm.

Mustard Tree Arts Festival

Lois Davis had a painting in the top 10 and Debbie Strobel won top prize in the Community Artist group. Art is up through April 8th at Fellowship Bible Church in Little Rock.

Artist of the Month

Debbie Strobel won the drawing for the Artist of the Month. Her paintings will be on display at the Starving Artist Cafe in North Little Rock under the special "Pastel Society" area.

Board Meeting

The next meeting of the board will be at the Butler Center on April 21, 9-12am.

Our Website and Facebook Site

Be sure to check out the new look of our website at www.arkpastel.com. If you are on Facebook, "like" our Arkansas Pastel Society page.

Our monthly meetings are the first Tuesday of the month at 6:00 p.m. in the south auditorium of the Center for Health Education building of St. Vincent's Hospital. Email newsletter information to Debbie Strobel at sailstrobel@aristotle.net. Email web page information to Marlene Gremillion at gremartist@gmail.com.

Garvan Gardens Show



Best of Show - Jo Magee - "Silver Lining"



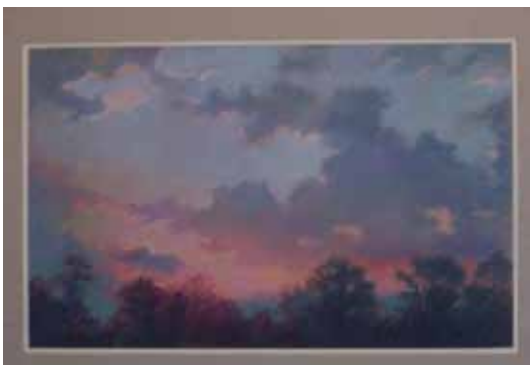
First Place - Judy Kizer - "Afternoon Hike"



Second place - Sheliah Halderman - "Tree Seeking Water"



Third Place - Mary Nancy Henry - "Evening Ride"



Honorable Mention - Susan Hurst - "Beginnings"



Honorable Mention - Lois Davis - "Spring"



Honorable Mention - Joyce Weaver - "A Stroll in the Garden"



Honorable Mention - Joanne Kunath - "Winter"

ARKANSAS PASTEL SOCIETY
South Arkansas Arts Center Member's Only Show
El Dorado, Arkansas ♦ Merkle and Price Galleries
June 1 – 29, 2012

Calendar:

- May 31, 2012 - Painting due to SAAC in El Dorado
If you want Virmarie to deliver your painting to El Dorado, deliver paintings to her by May 25th - email her at vdepoyster@yahoo.com to schedule time
- June 1, 2012 - Hang date, Show Opens
- June 9, 2012 - Artist Reception, 6 - 8 pm
- June 29, 2012 – Show Closes
- July 2, 2012 – Pick up hand delivered entries at SAAC; will transport back to Little Rock

ELIGIBILITY AND SALES:

- Commission: 35% of sale of artwork shall be given in commission to SAAC
- No artwork can be included in a show if it has previously shown at SAAC unless it has previously hung in a SAAC sanctioned competition.
- Artwork should be 80% soft or oil pastel.
- Members may enter 2 paintings each.
- There is no entry fee.
- Entries must be original and executed within the last three years.
- Images from internet or copyrighted materials may not be used as source. Work must be artist's original work.
- APS reserves the right to refuse any work submitted.
- Entries must be suitably framed under glass or Plexiglas and ready to hang with wire hangers (saw tooth hangers are absolutely not allowed).

ARKANSAS PASTEL SOCIETY
South Arkansas Arts Center Member's Only Show
El Dorado, Arkansas ♦ Merkle and Price Galleries
June 1 – 29, 2012

ENTRY FORM

Artist Name: _____

Artist email: _____

Artist phone number: _____

Entry #1 Title _____

H" x W" _____

Soft or Oil Pastel _____ Sale Price: _____

Entry #2 Title _____

H" x W" _____

Soft or Oil Pastel _____ Sale Price: _____

Please email your entry form to vdepoyster@yahoo.com

LEARN TO PAINT WITH EXPRESSIVE COLOR



Make Your Paintings Vibrant!

"Red Head" 16 x 20 oil on canvas

- Learn To Use Color That Pops.
- Create Compositions That Cannot Be Ignored.
- Create Canvases That Are Provocative and Vibrant.

Spring Painting Workshop With Matt McLeod

Wednesday - Friday • April 25-27 • 9:00 a.m. - 4:00 p.m.
Pulaski Heights Christian Church
\$300 • Limit 10 Students

501.837.4491

www.mattmcLeod.com

MATT McLEOD