

AUGUST

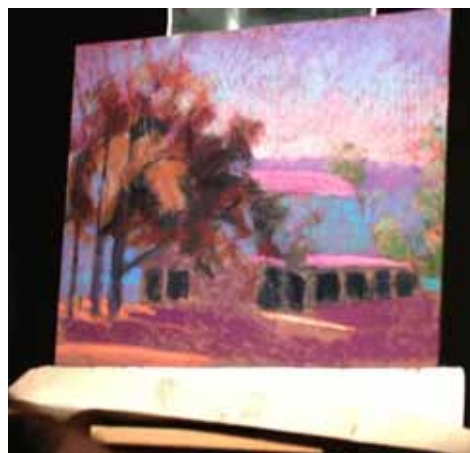
2013



We had a wonderful meeting last night. Charles Peer was our speaker and he did a great demonstration. Charles is a Professor of Visual Arts at John Brown University. He is a wonderful colorist and it was exciting to watch his painting evolve.

The deadline for our National Show is September 5th so everyone needs to get busy painting. This is our first show that has an online entry and it is very easy. If you know anyone who would like to sponsor our show, please let Nancy Martin or I know. All contributions are welcome. In the near future Nancy and I will be calling for additional help for the reception, unpacking, etc.

Attached to the newsletter are copies of a poster and save this date post cards. These can be printed and handed out or mailed to your mailing list. We will have invitations available closer to the date of the show.



Lois Davis (for Virmarie)



Website: www.arkpastel.com
Web Master: Marlene Gremillion at gremartist@gmail.com.



**ENTER THE 5TH
ARKANSAS PASTEL SOCIETY
NATIONAL SHOW**

**ENTRY DEADLINE IS
SEPTEMBER 5TH**

Entry and Prospectus Information at

<http://www.onlinejuriedshows.com>

**Total cash and prizes of
approximately
\$5,000**

**All entries must be through
Online Juried Shows**

**2013 ARKANSAS PASTEL
SOCIETY NATIONAL SHOW
RECEPTION**

5:00 to 8:00 p.m.

Butler Center for Arkansas Studies
401 President Clinton Avenue
Little Rock, Arkansas



SAVE THIS DATE
NOVEMBER 8, 2013
5:00 - 8:00 P.M.



SAVE THIS DATE
NOVEMBER 8, 2013
5:00 - 8:00 P.M.



SAVE THIS DATE
NOVEMBER 8, 2013
5:00 - 8:00 P.M.



SAVE THIS DATE
NOVEMBER 8, 2013
5:00 - 8:00 P.M.



**2013 ARKANSAS PASTEL SOCIETY
NATIONAL SHOW RECEPTION**

Butler Center for Arkansas Studies
401 President Clinton Avenue
Little Rock, Arkansas



**2013 ARKANSAS PASTEL SOCIETY
NATIONAL SHOW RECEPTION**

Butler Center for Arkansas Studies
401 President Clinton Avenue
Little Rock, Arkansas



**2013 ARKANSAS PASTEL SOCIETY
NATIONAL SHOW RECEPTION**

Butler Center for Arkansas Studies
401 President Clinton Avenue
Little Rock, Arkansas



**2013 ARKANSAS PASTEL SOCIETY
NATIONAL SHOW RECEPTION**

Butler Center for Arkansas Studies
401 President Clinton Avenue
Little Rock, Arkansas

AUGUST 2013

People, Places & Things!

September Program

*Please bring an unframed painting, either finished or in progress,
for a critique by Gary Simmons.*

Artist of the Month

New member Sheb Fisher was chosen as our Artist of the Month. She will display her paintings at Starving Artist Cafe for the month of August.

Community Bakery APS Members Show

Show date: August 7th, Wednesday--September 3rd, Thursday.

David Paul Cook Workshop

Saturday, August 24, 2013, 9:30 a.m. to 3:00 p.m.

White Wagon Farm, 24627 Highway 365 North, 2 miles beyond Maumelle. Fee \$35.00.

Bring a sack lunch for noon-time refreshment. Coffee and cookies provided.

This one-day workshop will help you learn:

- * 14 Ways to be Comfortable and Safe while Painting Outdoors.
- * 8 Ways of Getting Ready to Paint Outdoors.
- * Simplifying the Landscape for Easier Rendering.
- * Showing Distance.
- * What to do about All That Summer Green out there!
- * Outdoor Gear you can make or buy inexpensively.
- * Painting "alla prima", and "contre jour."

Bring your outdoor painting gear with you. Weather permitting, we will do some painting together in the gardens of White Wagon Farm. Bring any landscape photos or clipping you may want to try when we work indoors. This workshop is for people working in all drawing and painting mediums. The instructor will use graphite, pen/ink, and watercolor to demonstrate. To enroll, e-mail or phone:

davidpaulcookart@sbcglobal.net or (501) 851-6577

Checks should be made payable to: David Paul Cook, and mailed to 4 Ophelia Court, Maumelle. AR 72113. Your check will complete the enrollment process and secure your place in the workshop.

Bill Garrison Outdoor Oil Painting Workshop

RUNNING DEER RETREAT • DANVILLE, AR. • DATES: October 3, 4 and 5, 2013

We had a full house last year and the workshop is filling fast this year.

\$75. deposit will hold your place. Details are on the website <http://www.runningdeerretreat.com/>

or call: Paula Steel at 479-495-2401 or e-mail: paulasteel@arkwest.com

AUGUST 2013



Community Bakery Show

See the results of the set-up for our show at Community Bakery (above).

Sequoyah National Research Center

Did you know that there is an archival repository for all forms of American Indian expression affiliated with UALR? It is in University Plaza. Together with the ever-growing manuscript and special collections archives, the Center houses the largest collection of Native American expression in the world. Check it out at <http://ualr.edu/sequoyah/>.

Our monthly meetings are the first Tuesday of the month at 6:00 p.m. in the Southwestern Bell Room of the Center for Health Education building of St. Vincent's Hospital. Email newsletter information to Debbie Strobel at sailstrobel@aristotle.net. Email web page information to Marlene Gremillion at gremartist@gmail.com.