

**ARKANSAS**  
**PASTEL SOCIETY**

*Newsletter: August, 2014*

*President's Message - Debbie Strobel*

Even though it is only a few days into the month, August has already been extremely busy for the Pastel Society. Our Juried Show closed on the 1<sup>st</sup>. We had 42 pieces entered from 23 artists. In a few weeks the notifications will go out about who got accepted. We may have a few more Signature Members after that happens. Also on Sunday the 3<sup>rd</sup>, Tom Herrin and Sister Maria put our show up at Community Bakery. We had 25 pieces put up on Sunday, and two have already sold! Congratulations to Sister Maria and Cathy Spann! I hope the rest of us will have success there over the next couple of months.

We had a great meeting last night but only eleven showed up to participate. I guess summertime vacations hurt us. Even Lois was on vacation and Shirley agreed to take over and lead the evening. Thanks so much to her for doing that! We learned about choosing values in light and shadow. All who were there thought it was a great lesson.

Tom's workshop is coming up on August 16<sup>th</sup> and there are still a few places open. A registration form is included with the newsletter.

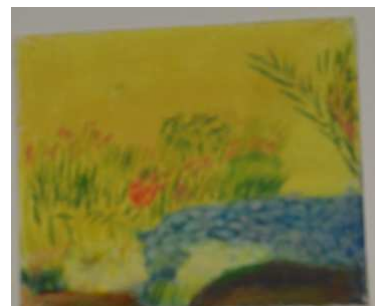
At the next meeting we will have sign up sheets for helping with the set up and opening of our Juried Show. Please volunteer – because of our small size we need everyone to help in some way!

*Our monthly meetings are held on the first Tuesday of the month at 6:00 PM in the Arkla Room of the Center for Health Education Building of St. Vincent's Hospital. If you need directions, go to <http://www.arkpastel.com/contact-us> and click on the link.*

## *August Program - Shirley Anderson*

Shirley challenged us with an exercise that demonstrated that colors in sunlight are lighter in value than colors in shadow - the darkest color in full sunlight is still lighter in value than the lightest color in full shade. We first blocked in the sunlit areas using three shades of yellow; then we followed up by blocking in the shade areas using three shades of blue. Then we used our full set of pastels to produce a realistic painting.

Newsletter Editors' note: My photos are a bit out of focus! So sorry!!!



## *Mini Workshop*

You won't want to miss this one!

### **Use of Your I Pad or Tablet in Pastel Composition**

Tom Herrin will be conducting a mini workshop August 16, 2014, 9:30 AM to 3:00 PM

Location: Butler Center, Little Rock AR

Donation: \$20 (APS)

**See the enrollment form at the back of the newsletter for additional details.**

- ✚ Please bring your usual pastel supplies.
- ✚ Bring your iPad if you use one.
- ✚ Bring watercolor supplies if you use them.
- ✚ Check the website for additional information.

## *Shows & Exhibits*

### **Community Bakery Exhibit – Sr. Maria Liebeck and Tom Herrin**



The Community Bakery Exhibit is now hanging. The dates for the Exhibit are August 3, 2014 to October 4, 2014.

St. Marie Liebeck and Cathy Spann have each sold a painting from this exhibit. Congratulations!

## *APS Juried Show*

We have 42 entries from 23 artists for this show. Pieces will be selected in August.

## *Treasurers Report - Shelley Gentry*

We have a bank balance of \$8,106.91.

## *Welcome New Member*

We would like to extend a warm welcome to our newest member, **Michelle Clark**. So glad to have you join us!

**Arkansas Pastel Society  
Mini-Workshop  
Use of Your I Pad or Tablet in Pastel Composition**

By

Tom Herrin

August 16, 2014

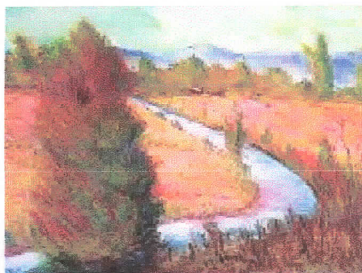
9:30AM-3PM

Butler Center, Little Rock, AR

Donation: \$20 (APS)

This helps support the APS National Show

Contact Person: Marlene Gremillion [gremartist@gmail.com](mailto:gremartist@gmail.com)



Tom plans to confine his instruction to use of the notebook computer as an aid to developing better compositions. If a participant has a tablet (Ipad or other tablet) I will also add some suggestions on how to use a tablet when developing paintings.

Talk will be limited to about an hour with hands on for the balance of the day.

Supplies limited to those you typically use to paint a simple pastel. If participants want to use watercolor for an under painting they will need to bring watercolor supplies as needed.

Cover cloths for table and floor also.

----- **Complete and send check made out to Arkansas Pastel Society** -----

To: Marlene Gremillion  
16 Carlet Lane  
Hot Springs Village, AR 71909

Name: \_\_\_\_\_

Address: \_\_\_\_\_  
\_\_\_\_\_

Phone: Home \_\_\_\_\_ Cell \_\_\_\_\_

E-mail: \_\_\_\_\_