

ARKANSAS
PASTEL SOCIETY

Newsletter: May, 2014

President's Message - Debbie Strobel

We had another impressive attendance at our May meeting. Lois once again did a wonderful job leading us in an exercise that taught us how to paint white objects (like eggs or snow) without using white pastel! It was both challenging and interesting. We had 3 visitors and one decided to go ahead and join! Continue to pass the word about our meetings and invite your friends.

Several of our members received awards recently. Marlene Gremillion won first place at the White River Plein Air Event. We had several winners at the Arkansas League of Artists Members Show. Sister Maria took first in the landscape category and I got third in the same group. Don Green also took a third in the floral/still life category. Stop by the Cox Creative Center and see the show. This is the same venue where we will have our Juried show in October. Be working now on paintings to put in that show. This will be your only opportunity in 2014 to earn points toward signature membership!

Sheliah Halderman reports that the Garvan Gardens show is up and looks great! Try to go by the Gardens if you are in Hot Springs and take a look.

The new APS brochures are in! I will bring them to each meeting. Please take a handful and distribute them to friends or to appropriate businesses. Let's help the Society grow!

Our monthly meetings are held on the first Tuesday of the month at 6:00 PM in the Arkla Room of the Center for Health Education Building of St. Vincent's Hospital. If you need directions, go to <http://www.arkpastel.com/contact-us> and click on the link.

May Program - Lois Davis

May's meeting challenged us to paint white objects without using white.

Getting Down to Work!



Some of our work





Mini Workshop

You won't want to miss this one!

Use of Your I Pad or Tablet in Pastel Composition

Tom Herrin will be conducting a mini workshop August 16, 2014, 9:30 AM to 3:00 PM

Location: Butler Center, Little Rock AR

Donation: \$20 (APS)

See the enrollment form at the back of the newsletter for additional details.

Shows & Exhibits

Garvan Woodland Gardens Show – Sheliah Halderman

Judy Kaiser and Anita Bogart helped Sheliah Halderman hang 27 paintings for the show at the Garvan Woodland Gardens. Thank you Sheliah, Judy and Anita!

The show will be open Thursday, May 01, 2014 - Friday, May 30, 2014 from 9:00 AM - 6:00 PM .
Please stop by to see this wonderful show if you are in Hot Springs.

Community Bakery Exhibit – Sr. Maria Liebeck

Get ready for the Community Bakery Exhibit coming up later this summer. The dates for the Exhibit are August 3, 2014 to October 4, 2014. Members may enter 2 or 3 paintings and there is no commission on the sale of artwork. Buyers will contact the artist directly. This is a great opportunity to show and sell your work!

Announcements:

Arkansas League of Artists Show Winners:

Sister Maria Liebeck	1 st Place – Land/City/Seascape
Don Green	3 rd Place – Floral/Still Life
Debbie Strobel	3 rd Place – Land/City/Seascape

Marlene Gremillion

1st Place - White River Plein Air Event

Tiffany Belfiore – Arkansas Young Artist Association

1st place Pastel Realistic

1st place – Acrylic Realistic

1st place – Mixed Media 2-10 Realistic

4th place – Mixed Media low relief

Treasurers Report: \$8209 in the bank.

Welcome New Members

We would like to extend a warm welcome to our newest members - so glad to have you join us!

Robin Miller-Bookhout

Yvonne Head

Bingyu Belfiore (Tiffany)

Robin Hazard-Bishop

And welcome back, Sue Hunter !

**Arkansas Pastel Society
Mini-Workshop
Use of Your I Pad or Tablet in Pastel Composition**

By

Tom Herrin

August 16, 2014

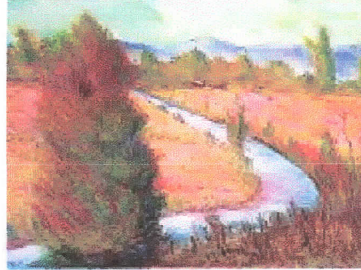
9:30AM-3PM

Butler Center, Little Rock, AR

Donation: \$20 (APS)

This helps support the APS National Show

Contact Person: Marlene Gremillion gremartist@gmail.com



Tom plans to confine his instruction to use of the notebook computer as an aid to developing better compositions. If a participant has a tablet (Ipad or other tablet) I will also add some suggestions on how to use a tablet when developing paintings.

Talk will be limited to about an hour with hands on for the balance of the day.

Supplies limited to those you typically use to paint a simple pastel. If participants want to use watercolor for an under painting they will need to bring watercolor supplies as needed.

Cover cloths for table and floor also.

----- **Complete and send check made out to Arkansas Pastel Society** -----

To: Marlene Gremillion
16 Carlet Lane
Hot Springs Village, AR 71909

Name: _____

Address: _____

Phone: Home _____ Cell _____

E-mail: _____